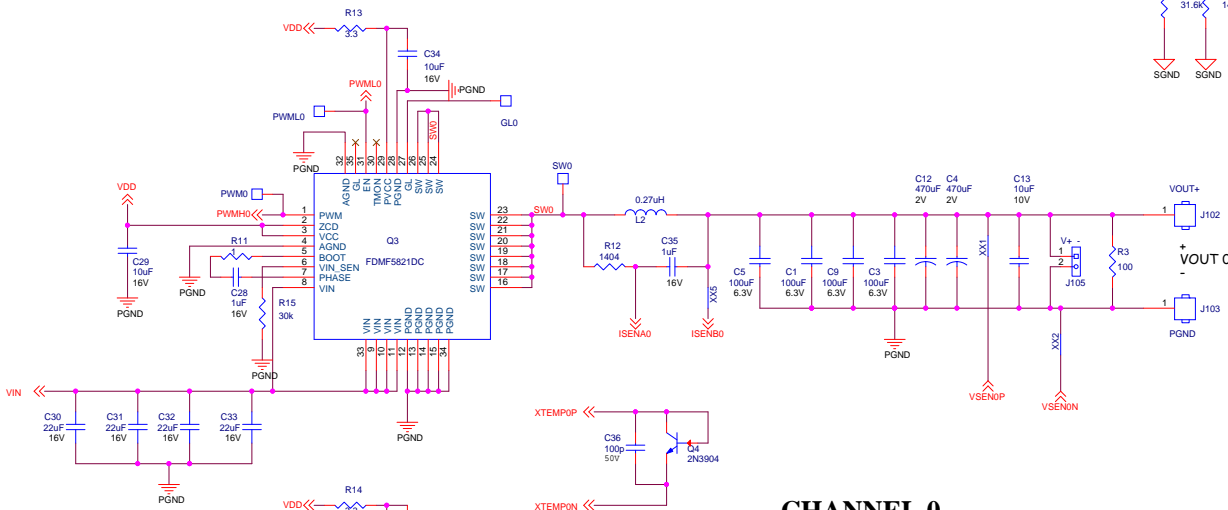
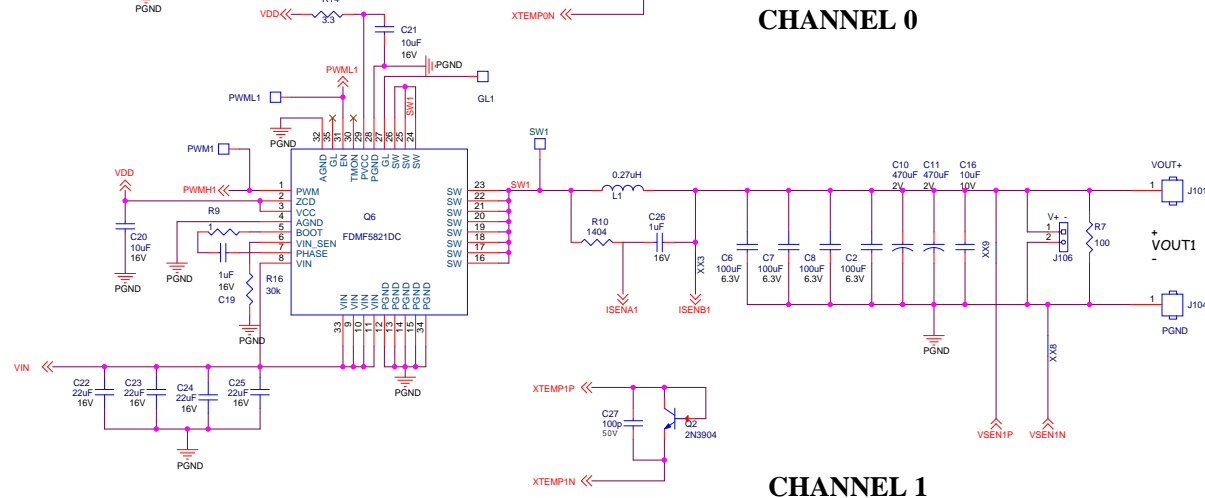


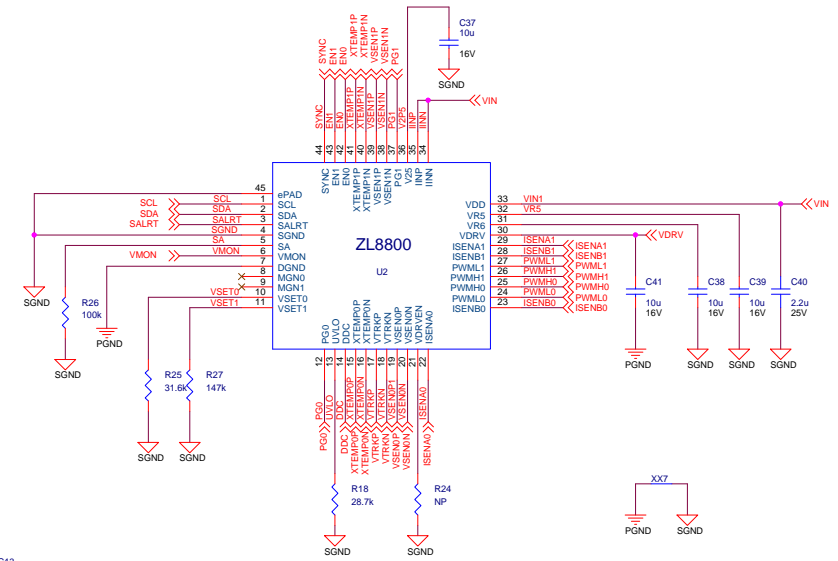
ZL8800 DUAL CHANNEL



CHANNEL 0

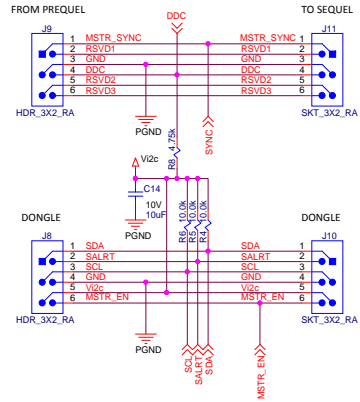


CHANNEL 1

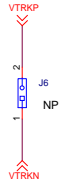


Title				
ZL8800 DUAL CHANNEL DEMO				
Size	Document Number			Rev
C	AUTHOR: ANAND RAMAMURTHY			B
Date:	Monday, June 17, 2013		Sheet	1 of 2

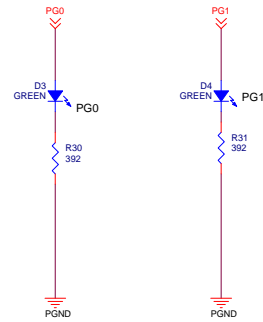
BOARD TO BOARD INTERFACE



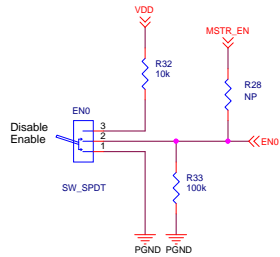
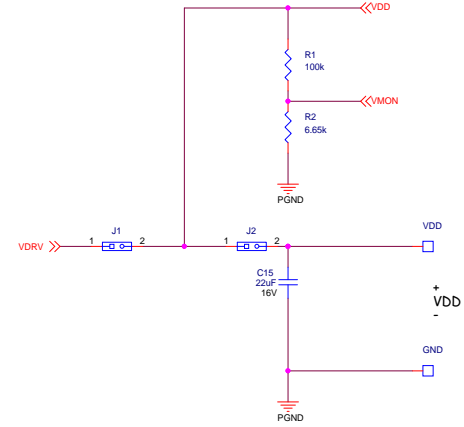
TRACKING



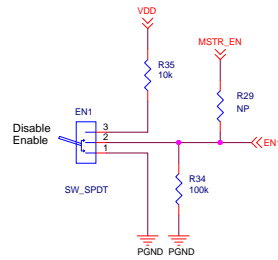
POWER GOOD



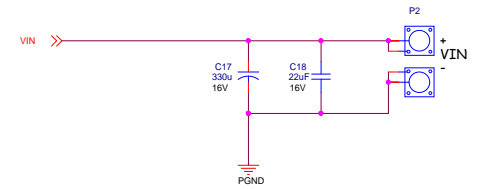
DRIVER SUPPLY



ENABLE



ENABLE



INPUT CONNECTOR

ZL8800 INTERFACE

Title			
ZL8800 DUAL CHANNEL DEMO			
Size	Document Number		Rev
C	AUTHOR: ANAND RAMAMURTHY		
Date:	Monday, June 17, 2013		Sheet 2 of 2